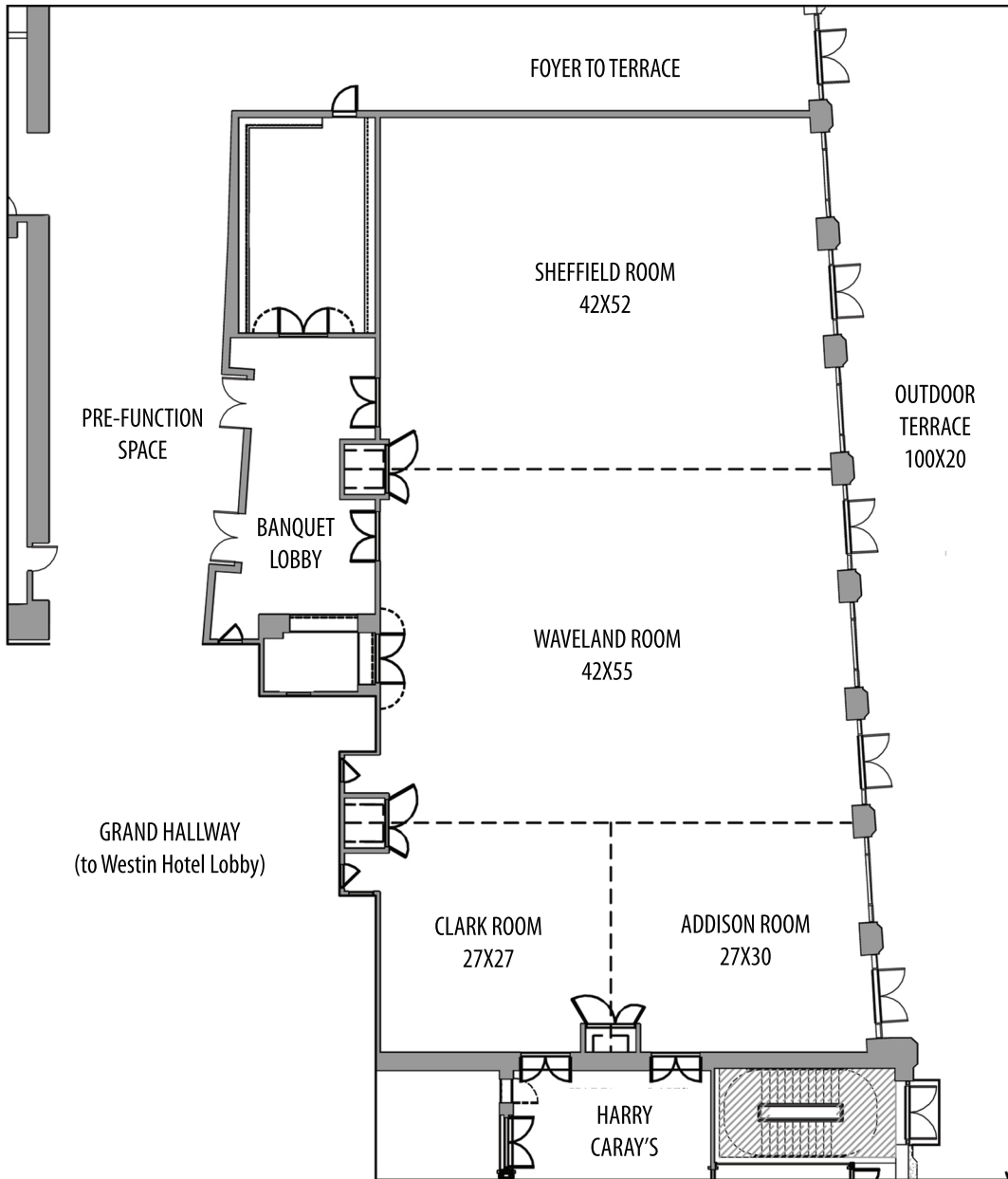




HARRY CARAY'S BALLROOM



Room	Theatre	Classroom	Conference	Reception	Banquet	Trade Show	Dimensions	Sq Footage
Clark	70	40	24	50	40	4 booths	27' X 27'	729
Addison	70	40	24	50	40	5 booths	27' X 30	810
Waveland	240	150	75	200	120	14 booths	42' X 55'	2310
Sheffield	240	160	77	200	120	14 booths	42' X 52'	2184
Clark & Addison	160	100	50	140	80	9 booths	27' X 57'	1539
Wave/Shef	480	300	N/A	400	240	28 booths	84' X 54'	4536
Clark/Add/Wave	400	250	N/A	300	200	24 booths	69' X 56'	3864
Harry's Ballroom	630	400	N/A	500	360	38 booths	111 X 55'	6105

FEATURES

15' Ceilings | Zoned Lighting | Zoned Sound | Room Darkening Shades
 Outdoor Terrace can be tented | Internet Access | State of the Art Audio Visual Capabilities